

How are you tracking MS4 compliance?

SAM IS™ offers a modern solution for MS4 compliance using the latest in cloud technology, a user-friendly interface, and automated dashboards to produce charts, maps, and reports that help you track and share your MS4 progress. The SAM IS™ Stormwater module assists with compliance with each of the **six Minimum Control Measures (MCMs) in the MS4 permit** and includes:

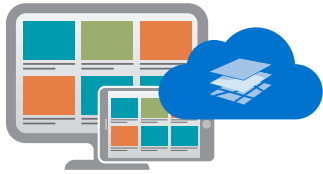
- » Stormwater system database structure, including outfalls, catch basins, manholes, pipes, subsurface structural best management practices (BMPs), surface BMPs, channels (i.e., swales or ditches), and culverts
- » Work order functionality to streamline field assignments, prioritize work based on condition, track progress, and integrate with mobile data collection tools
- » Mobile data collection tools to collect inspection and maintenance operations in the field, including illicit discharge detection and elimination (IDDE) outfall screening and catchment investigations
- » Map-based interface loaded with environmental layers such as watershed Total Maximum Daily Loads (TMDLs), impaired waters (including pollutants), FEMA floodplains, and outstanding resource waters
- » Document library to store MS4-related files, including the Stormwater Management Program (SWMP), outreach and education materials, and annual reports
- » Editable calendar of upcoming MS4 due dates and ongoing compliance efforts
- » Report templates to export information from SAM IS™ for Notice of Intent, SWMP, and annual report submissions



Our software solution can help:

- » Organize all your stormwater asset data and compliance documentation in one place
- » Prioritize, track, and follow up on IDDE inspections
- » View and share high-level compliance progress and system condition information
- » Schedule and plan maintenance activities
- » Track work completed in the field
- » Justify budget requests with data

Data organization



Log in to the secure **web-based portal** from any computer or tablet.



Leverage your existing data and then add, update, or maintain your data using **ArcGIS Online**.

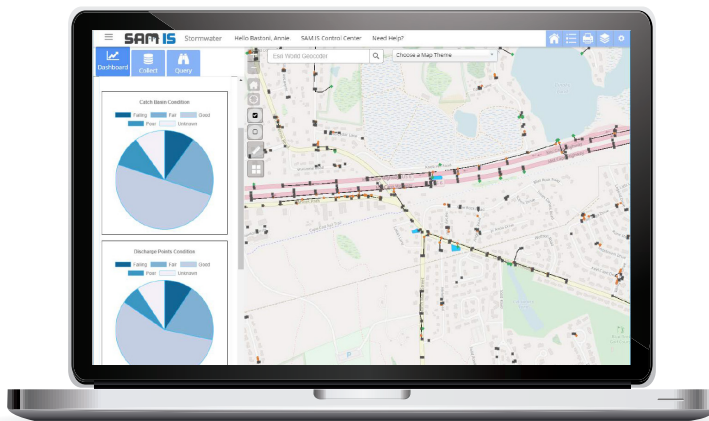


Proactively **analyze** your assets. **Build scenarios** to explore future conditions.



Schedule inspections, **manage** maintenance needs, and **monitor** improvements identified in the analysis or by the user. Use the data to justify **budget requests**.

SAM IS™ can help you store relevant information on our drainage network in a database, as well as in charts and graphs. This information is easily accessible every time you open SAM IS™ and is available to export and print to communicate with stakeholders and track progress. SAM IS™ will allow you to view and update the following information, based on data availability:



- » Current condition of all assets
- » Photos and plans attached to assets
- » Assets that require follow up, either for IDDE or maintenance
- » Status and progress of work orders
- » Maintenance and repair history
- » Discharges to critical areas, impaired waters, and TMDL watersheds

Compliance with the six MCMs of the MS4 permit is easier with SAM IS™.

Schedule a demonstration

to see how we can help you with MS4 compliance.

www.samisbyvhb.com

As a Software as a Service product, SAM IS™ will be continually updated, and subscribers will automatically receive updates to their system. Version 1 of the SAM ISTM Stormwater module is currently available to users. Functionality planned for future versions of this module includes:

- » Catchment delineations by outfall to assist with prioritization and system vulnerability factor identification
- » Outfall ranking based on IDDE MS4 requirements
- » Budget development for drainage system maintenance and MS4 compliance
- » Comprehensive annual report document template, complete with data compilation and prompts for narrative updates
- » Culvert condition inspections
- » Facility inspections for good housekeeping MS4 compliance
- » Catch basin cleaning and street sweeping tracking and optimization
- » Pollutant load reduction calculator and tracking tools for BMPs